



TITLE: AN ILKHANID LUSTRE AND COBALT GLAZED MOULDED STELLAR TILE.

LOCATION: SULTANABAD OR KASHAN, 14TH CENTURY

DESCRIPTION: AN ILKHANID LUSTRE AND COBALT GLAZED MOULDED STELLAR TILE
SULTANABAD OR KASHAN, 14TH CENTURY

The Centre moulded with a bold lotus flower raised against a lustre ground, in a blue ground inscription border.



TITLE: AN ILKHANID COBALT-BLUE AND LUSTRE PAINTED STELLAR TILE

LOCATION: CENTRAL IRAN, EARLY 14TH CENTURY

DESCRIPTION: AN ILKHANID COBALT-BLUE AND LUSTRE PAINTED STELLAR TILE
CENTRAL IRAN, EARLY 14TH CENTURY

The centre painted with a very strong lustre design of a duck amongst dense foliage left in reserve against the lustre ground, set within an octagon flanked by eight triangular floral panels, in a cobalt-blue border of reserved naskh inscription, one corner restored, excellent glaze 8 ¼ in. (20.9cm) across.



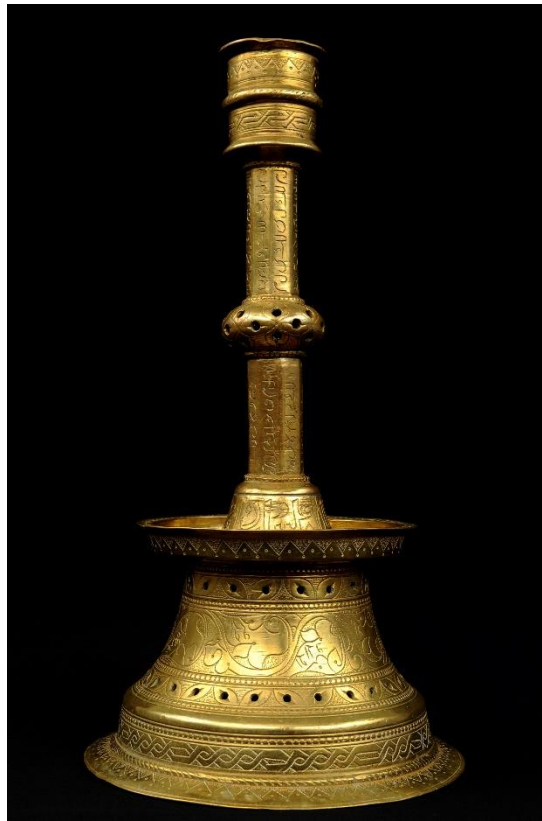
TITLE: A LARGE SAMARKAND CONICAL POTTERY BOWL

LOCATION: CENTRAL ASIA, 10TH CENTURY

DESCRIPTION: A LARGE SMARKAND CONICAL POTTERY BOWL

CENTRAL ASIA, 10TH CENTURY

On short foot, the pick-tan ground with a central interlace roundel of strapwork
With red foliate terminals all outlined in black, the sides with six large alternating
White and olive-green sturgeon each flanked by two groups of three roudels, the
Interstices with black panels of red and white dotted motifs, a bang of stylized
Kufic above and below, the exterior with simple triangles formed of diagonal
Ochre lines, repaired breaks, small areas of plaster infill 14 1/8in (38.1cm) diam.



TITLE: AN EARLY OTTOMAN ENGRAVED BRASS CANDLESTICK

LOCATION: TURKEY, FIRST HALF 16TH CENTURY WITH LATER ADDITIONS

DESCRIPTION: AN EARLY OTTOMAN ENGRAVED BRASS CANDLESTICK

TURKEY, FIRST HALF 16TH CENTURY WITH LATER ADDITIONS

With hipped and curved truncated conical base, cup-shaped shoulder and faceted tall columnar neck with cylindrical mouth, the body engraved with a band of powerfully drawn meandering arabesques, a pierced band of leaves above and below, the neck with a central pierced boss with engraved leaf-motifs, later engraved with inscriptions in various places, shoulder cracked, original decoration rubbed, over-polished 11 1/4 in. (28.5 cm) high.



TITLE: AN OTTOMAN MOTHER-OF-PEARL AND TORTOISESHELL DECORATED STRINGED INSTRUMENT (KEMANCHE)

LOCATION: TURKEY, PROBABLY 19TH CENTURY

DESCRIPTION: AN OTTOMAN MOTHER-OF-PEARL AND TORTOISESHELL DECORATED STRINGED INSTRUMENT (KEMANCHE)

With flat wooden face and four strings, the neck and upper section together
With the underside inlaid with designs of scrolling and floral sprays
16in. (40.5cm.) long.

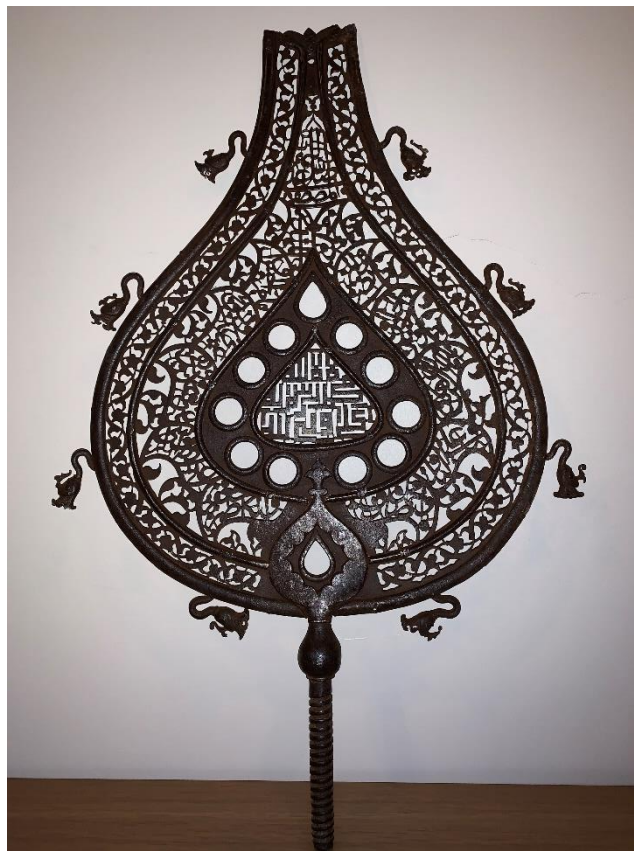


TITLE: A SAFAVID BLUE, BLACK AND WHITE SOFT PASTE PORCELAIN BOTTLE

LOCATION: IRAN, LATER 17TH CENTURY

DESCRIPTION: A SAFAVID BLUE, BLACK AND WHITE SOFT PASTE PORCELAIN BOTTLE
IRAN, LATER 17TH CENTURY

With spherical body rising to a tubular neck on short foot, the body with large Partridges alternating with floral sprays on cobalt-blue ground, floral meander Around the shoulder, the neck with floral sprays, slightly stained, design rubbed On neck, mouth with later silver mount, probably covering chip
11 ½ in. (29.4cm) high.



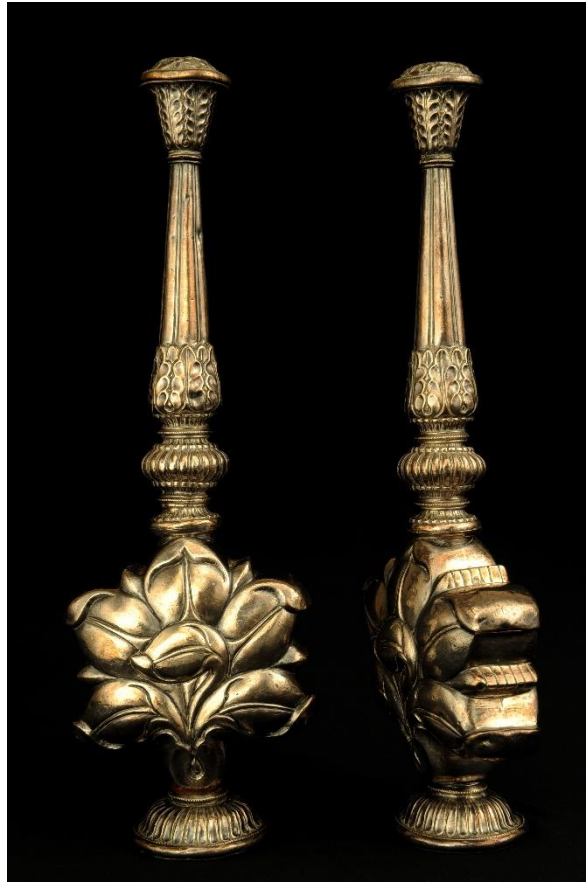
TITLE: A SAFAVID PIERCED STEEL PROCESSIONAL STANDARD (ALAM)

LOCATION: PROBABLY ISFAHAN, CENTRAL IRAN, 17TH CENTURY

DESCRIPTION: A SAFAVID PIERCED STEEL PROCESSIONAL STANDARD (ALAM)

PROBABLY ISFAHAN, CENTRAL IRAN, 17TH CENTURY

A large drop-shaped panel within raised steel ribs, the outline punctuated by Regular dragon-head terminals, with central drop-shaped pierced steel square Kufic inscription within border of cut-out roundels against plain ground within Border of pierced naskh inscriptions interlaced by continuous graduated Arabesques together forming a palmette design, in narrow border of vegetal Motif, replaced section in central inscription, wooden stand 22in. (56cm) high without shaft; shaft 7 3/8in. (8.7cm) high.



TITLE: A PAIR OF INDIAN ROSEWATER SPRINKLERS

LOCATION: NORTH INDIA, 18TH CENTURY

DESCRIPTION: A PAIR OF INDIAN ROSEWATER SPRINKLERS

NORTH INDIA, 18TH CENTURY

The body of each in the form of an iris flowerhead, the high tapering neck with Reeded boss and leafy band below, flaring into a trumpet mouth decorated with Flowers, on a fluted domed foot, slightly rubbed and dented, one foot rejoined
Each 10 $\frac{3}{4}$ in. (27.4cm) high (2).